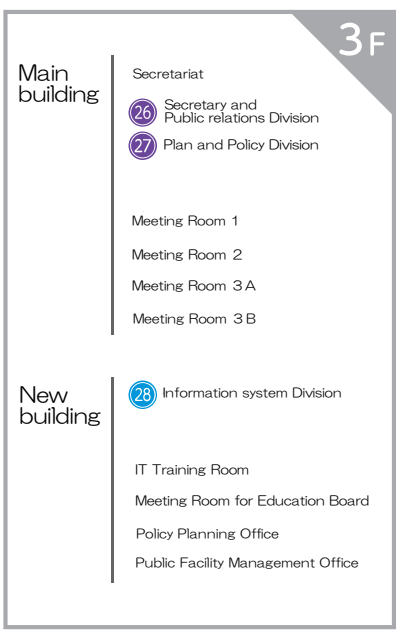
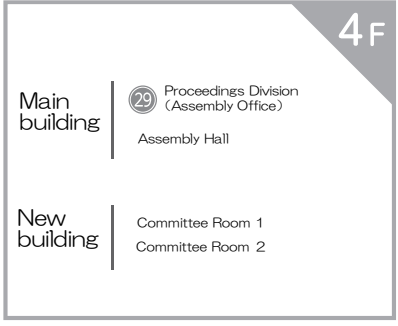
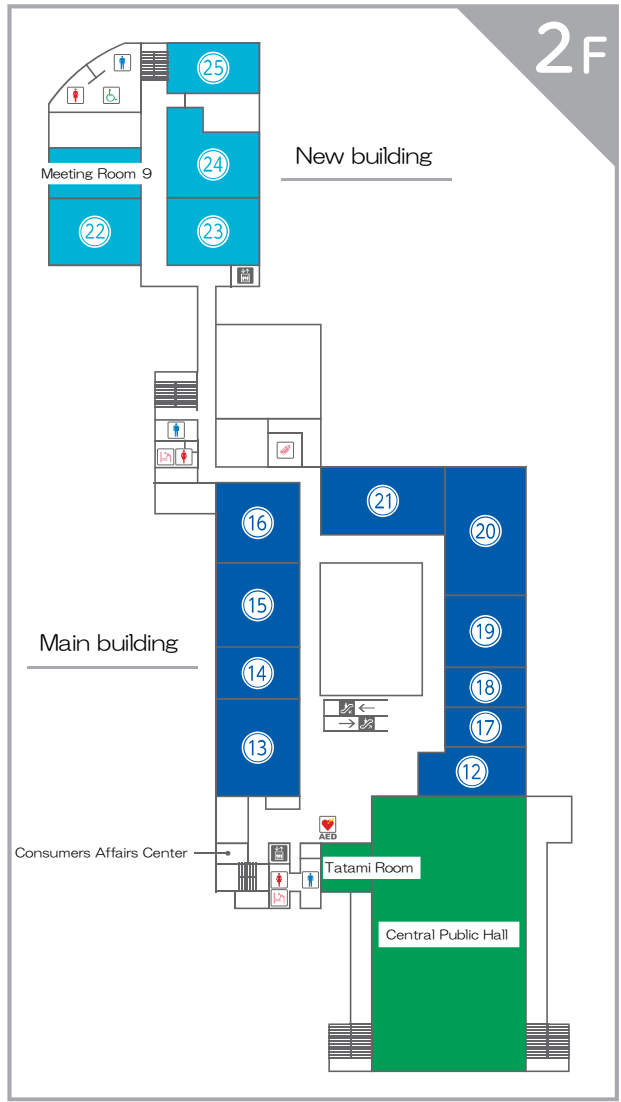
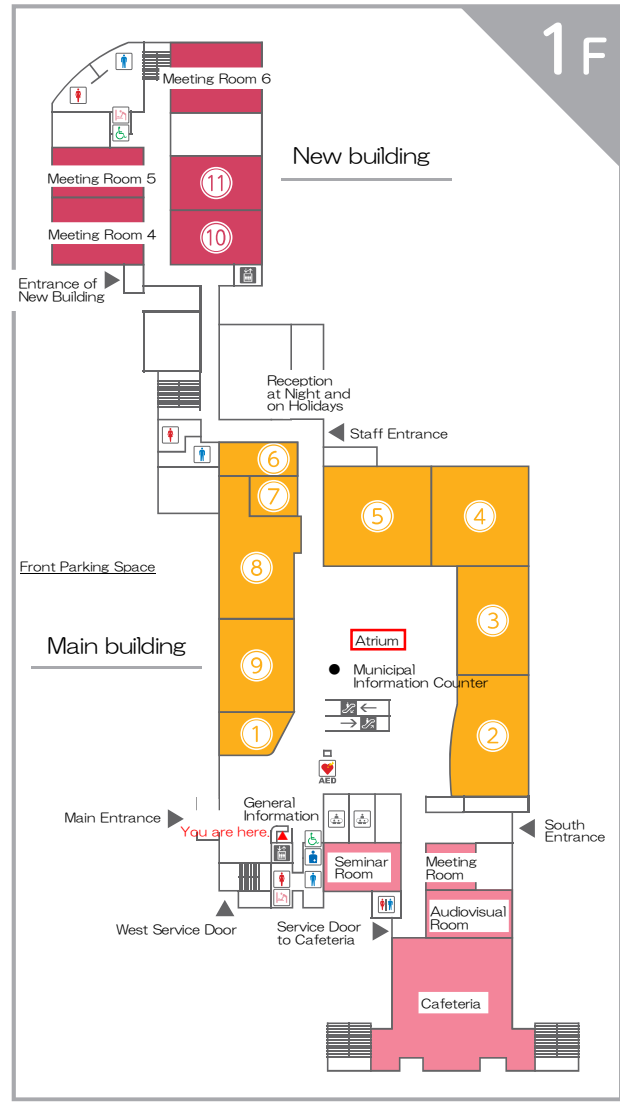


General Information



- ① Certificate Counter
- ② Resident's Division
- ③ Insurance and Medical Division
- ④ Social Welfare Division
- ⑤ Health and Longevity Division
- ⑥ Cashier's Department
- ⑦ Designated financial institution
- ⑧ Credit Management Division
- ⑨ Taxation Division
- ⑩ General Affairs Division
- ⑪ Disaster Prevention and Safety Division

- ⑫ Environmental Division
- ⑬ Civil Engineering Division
- ⑭ Urban Development Division
- ⑮ Urban Planning Division
- ⑯ Sewerage Division
- ⑰ The Agriculture Support Program Division
- ⑱ Industry Promotion Division
- ⑲ Life Long Learning Division
- ⑳ School Education Division
- ㉑ Child Rearing Support Division
- ㉒ Childcare Division
- ㉓ Citizens' Collaboration Division
- ㉔ Finance Division
- ㉕ The Audit Commission Secretariat

- Toilet
- Toilet (Men)
- Toilet (Women)
- Accessible Toilet
- Ostomate
- Baby bed
- Nursing room
- Escalator
- Elevator
- Consultation room
- Automatic external defibrillator

- Toilet
- Toilet (Men)
- Toilet (Women)
- Accessible Toilet
- Ostomate
- Baby bed
- Nursing room
- Escalator
- Elevator
- Consultation room
- Automatic external defibrillator